



BiClamp[®] knife 220

Seal and cut for
open surgical procedures

BiClamp® knife 220 – multifunctional instrument for open surgery



**RELEASE
BUTTON**
Prevents unintentional cutting – can be unlocked from both sides.

**COAG-
BUTTON**
Comfortably activate sealing without changing your grip.

CUTTING
As simple as closing your hand.

**HAND
TRIGGER**
Locking function ensures adequate clamping force. For optimized sealing results.

The BiClamp® knife 220 is valid for sealing vessels up to 7 mm in diameter. The vessel is grasped, sealed and mechanically dissected in a single workflow. Simply open your hand to regrasp at any time.

88 %
of users were satisfied with the prevention of tissue sticking

Designed to simplify your surgery

Compared to surgical treatments without vessel sealing instruments the operating time is reduced. Replacing clips or sutures with thermofusion reduces postoperative pain as well as duration and dosage of analgesia.

- Prevents inadvertent thermal effect to adjacent tissue due to a temperature on the back of the jaws of below 40°C
- Makes immediate hemostasis rapidly available – biCLAMP mode supports strong initial coagulation

- Vessels sealed with BiClamp® knife 220 & thermoSEAL® mode withstand high burst pressure with a short sealing duration
- Dissect close to critical structures – lateral thermal spread < 1 mm and no carbonization
- Control diffuse bleedings of larger surface areas – advanced bipolar coagulation with open jaws

JAWS
The jaws curvature enables an improved view on areas that cannot be reached easily. Length of the jaws: 36 mm.

85 %
of users were satisfied with the sealing performance of vessels



BiClamp® knife 220 and VIO® 3 – a winning team

Vessels sealed with the BiClamp® knife 220 are validated to resist more than 3-fold systolic blood pressure. It maintains the same reproducible quality of vessel sealing during repeated cycles of activation.



Multimedia area

VIO® 3 – plug and operate

- The digital instrument recognition configures the system automatically with the appropriate mode and effect.
- You receive a reliable, reproducible and homogeneous tissue effect – largely independent of the tissue type, due to constant voltage control.
- 25 million measurements/sec improve the reproducibility of the tissue effect.
- Plug and Operate: The MF-2 plug is compatible with VIO® 300 D and VIO® 3 providing automatic instrument recognition.

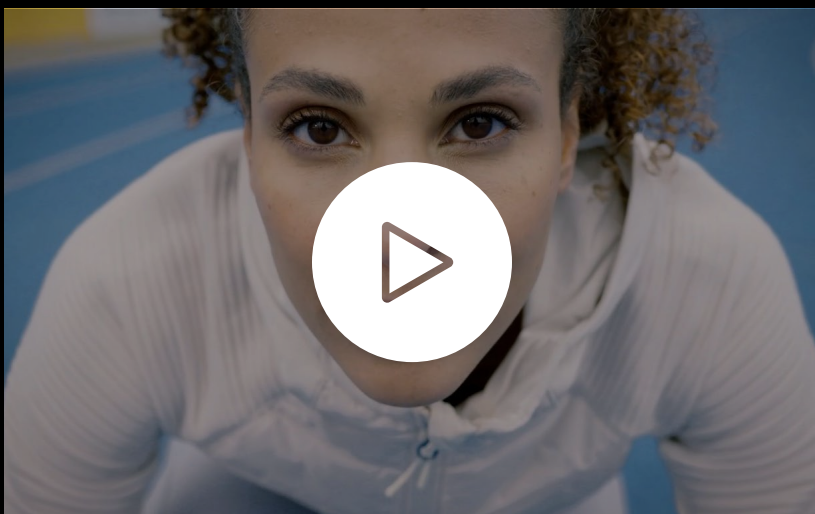
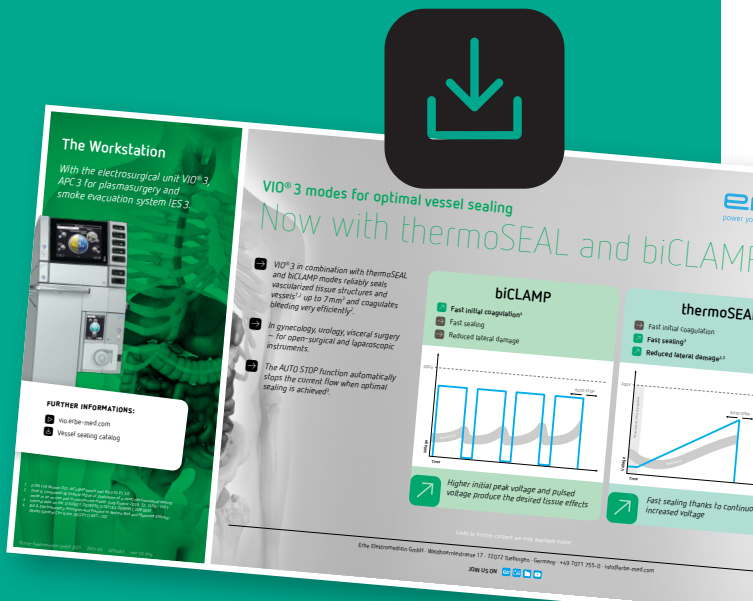


VIO® 3 modes for optimal vessel sealing *thermoSEAL®* and *biCLAMP*

BiClamp® knife 220 is operated with VIO® 3 using the thermoSEAL® mode.

biCLAMP mode expands the versatility of the instrument and helps adapting to the unique conditions in each patient.

Learn more about *thermoSEAL®* and *biCLAMP* mode [here](#).



Designed to simplify your surgery



Product trailer



How to use



Multivisceral abdominal resection with BiClamp® knife 220 – Jörg Baral, MD; Deputy head of the colorectal center, Municipal Hospital Karlsruhe, Germany

erbe-med.com/biclamp-knife-220

[Product catalog](#)

medical-videos.com

vio.erbe-med.com

erbe



Marketing claim list D189941

Erbe Elektromedizin GmbH · Waldhoernlestrasse 17 · 72072 Tuebingen · Germany · +49 7071 755-0 · info@erbe-med.com

JOIN US ON

