



VIRON X System
4K NIR imaging

Ascend and discover

New dimensions in surgery

As your trusted partner in electrosurgery for decades, we have gained a deep understanding of your daily needs and clinical challenges. Together, we have developed innovative solutions to support the best outcomes for your patients.

Now we're taking it a step further by bringing a second core technology for minimally invasive surgery directly to you with our new imaging portfolio. From now on, you can obtain complete surgical systems from a single source, with devices perfectly matched to your specific applications.

You can rely on Erbe's renowned quality and our exceptional service, which now extends to all product areas. Together, we can ascend and discover new dimensions in surgery and take your practice to the next level.

Choose Erbe – for advanced technology and service you can rely on!

ELECTRO-SURGERY
VIO®3
WORKSTATION



4K WHITE LIGHT & NIR IMAGING
VIRON X SYSTEM

ADVANCED TRIPOLAR DISSECTION
TRISECT RAPIDE®



"As an experienced surgeon, I have relied on Erbe as my partner for electrosurgery since many years. Now, with the addition of TriSect rapide® as an advanced energy tool and the VIRON X camera system, I'm impressed with the comprehensive support you provide. It's a game-changer for our surgical procedures."



Marcin Misiek M.D.
Head of Department of Gynecology
Hollycross Cancer Center
Kielce, Poland

The power of Imaging



The VIRON X camera system is designed for demanding applications: Impressive image quality in 4K and visualization of fluorescence offer a wide range of possibilities, especially in laparoscopy.



High-end Imaging

- 4K UHD: captured clarity by 4 CMOS sensors camera.
- NIR (ICG & autofluorescence) imaging: benefit from enhanced diagnostic precision in 3 visualisation modes.
- 4K medical monitors: enjoy razor-sharp images and detailed representation of the finest structures with extremely high brightness and color fidelity.



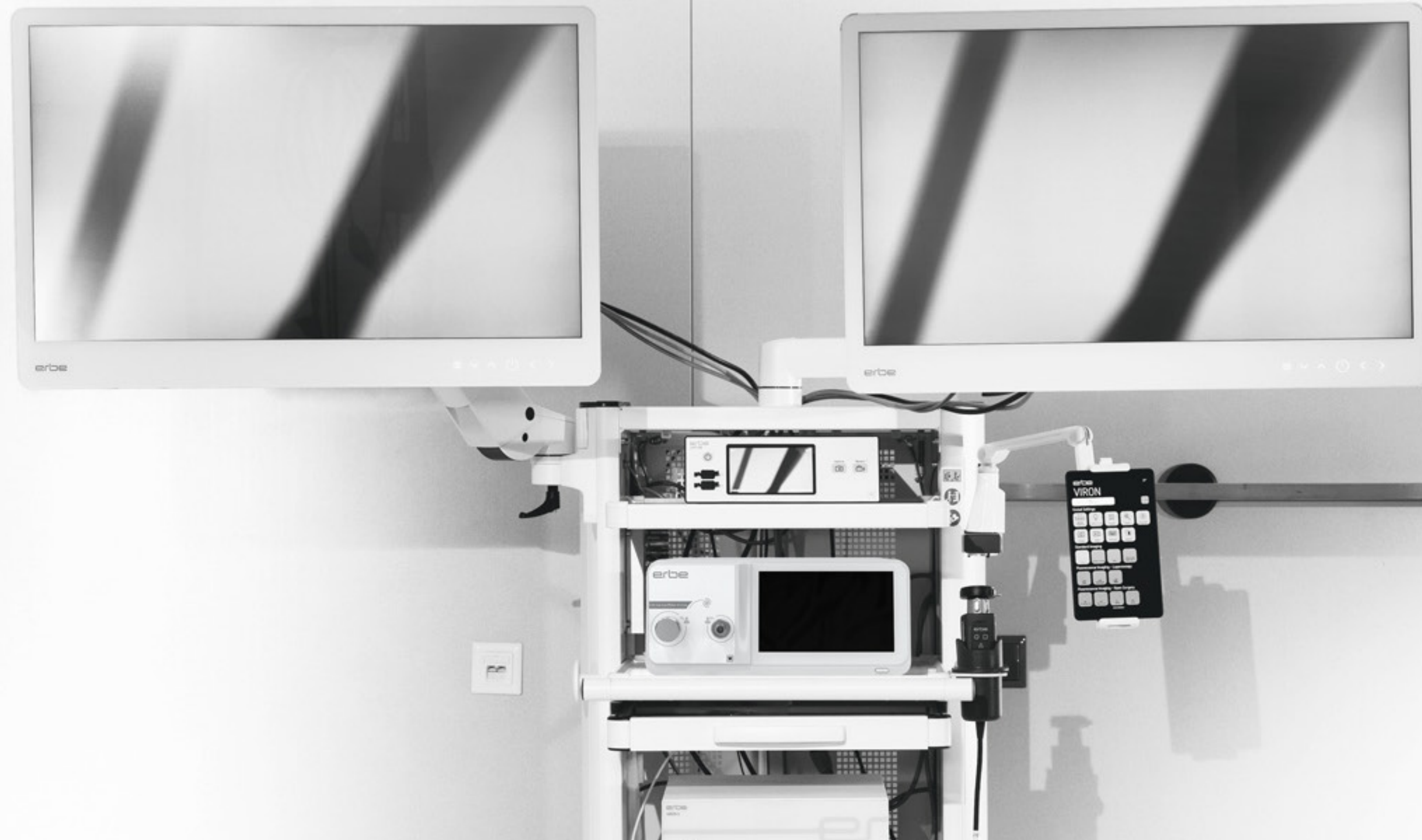
Flexibility

- Combined solutions: The VIRON X system includes insufflator and multiuse pump, making it a versatile system for all minimally invasive applications in daily clinical practice.
- Effortless transition: Switch into an open surgery setup, maintain flexibility and efficiency in the operating room.
- Identify fluorescent structures: The system allows ICG or autofluorescence visualization in both minimally invasive and open applications.



Integration & Connectivity

- Seamless integration: connect to your hospital's infrastructure and workflow.
- DICOM and HL7 connectivity: efficiently receive patient data and store image and video recordings with up to 4K resolution.
- Enhanced procedures with multiple video outputs: connect to additional monitors and video centers for a comprehensive visual experience.

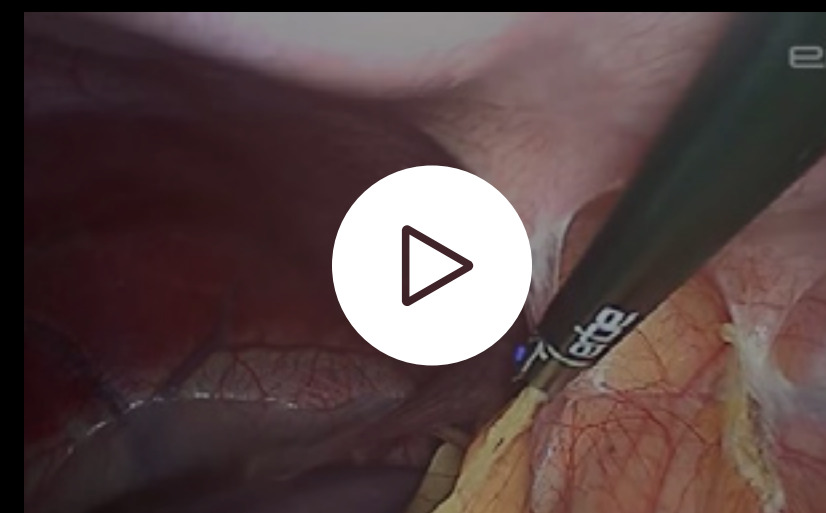


"Erbes VIRON X lets me work in comfort while having an excellent view during my laparoscopic procedures!"



Prof. Dr. med. Karolin Thiel
Chief physician and head of the visceral oncology center
St. Elisabeth-Klinikum, Ravensburg, Germany

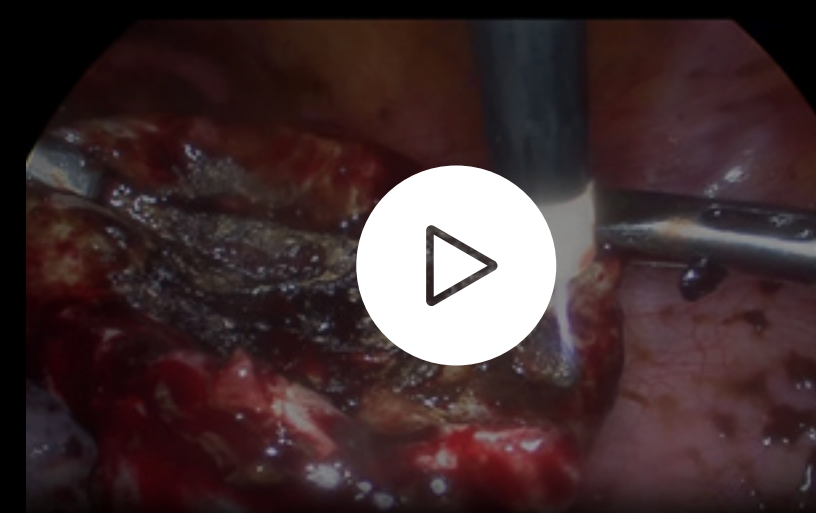
Clinical Applications



Laparoscopic living donor nephrectomy using TriSect rapide® with VIRON X



Endometrial ablation using BiClamp® LAP with VIRON X



Endometrial ablation using APCapplicator with VIRON X



Bipolar TCR of uterine septum using 18.5 CH Mini Resectoscope with VIRON X



VIRON X camera system

Discover visual clarity with advanced imaging technology!

This cutting-edge system features 4 CMOS sensors, three of them dedicated for RGB and one for NIR signal, delivering stunning 4K UHD resolution – four times the detail of Full HD.

Elevate your visual experience today.

PLUG & PLAY

11 surgery presets help to quickly adjust camera settings according to your needs.

VESMAX MODE

Digital enhancement for best contrast visualization.



Save your capital investment

one system for versatile clinical usage

Visualization modes

→ **White light image**
Natural colors for clear tissue differentiation



→ **Overlay Mode**
Features the NIR signal within the standard white light image for perfect orientation during NIR signal identification.



→ **Monochrome mode**
Representing the pure NIR image with high sensitivity to capture even low NIR intensity.



4K camera head

Put full control of your image and recording right at your fingertips!

Equipped with three programmable buttons, you can manage all your essential functions.

Enjoy seamless compatibility with both fixed focal and optical zoom couplers, ensuring versatility and precision for all your imaging needs.

Capture every detail with ease and excellence!



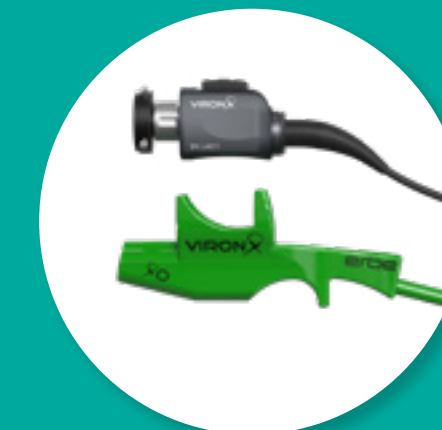
erbe

VIRON XO Illuminator

Quickly transfer from laparoscopy into an open surgery setup!

The XO adapter allows imaging with the same system in open surgical settings.

Autofluorescence expands the range of applications to include imaging in thyroid surgery without the administration of ICG.



VIRONX user app

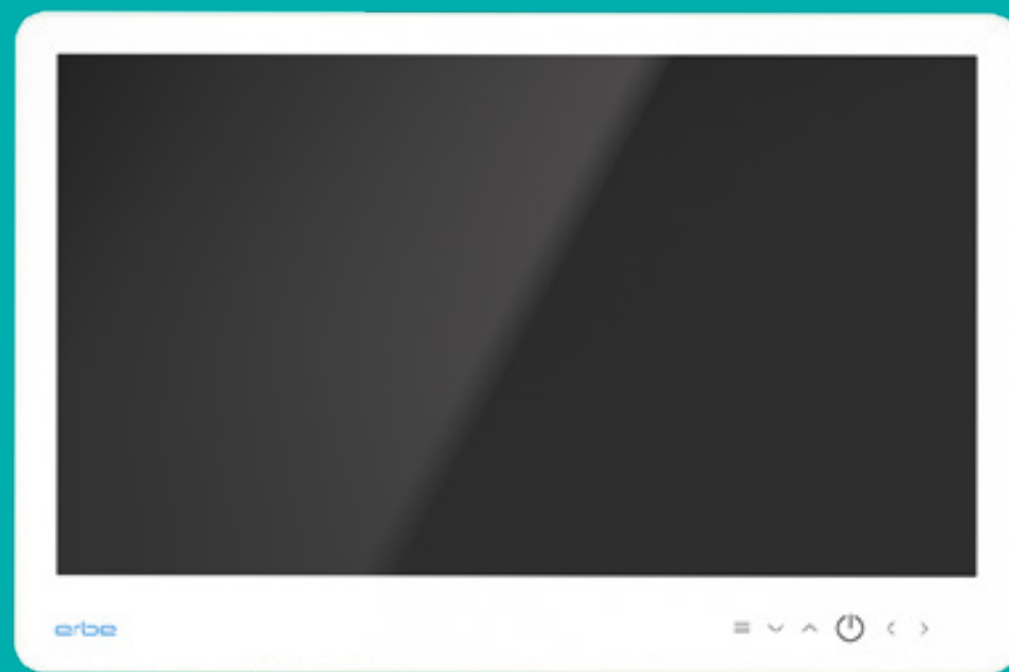
Access all imaging settings via VIRON app from anywhere in the operating room. Covering allows usage in the sterile environment.



4K medical monitors

Medical grade monitors for excellent view and utility in the operating room.

- True color images
- Double side anti reflection coating to reduce glare
- Wipeable surfaces for hygienic use



BUILT-IN POWER SUPPLY

Easy to connect without additional equipment

PASSIVE COOLING

No disturbing fan noise and closed housing for more hygiene.

TOUCHCONTROL PANEL

to ensure a flat surface that is easy to keep clean.

LED 610

Powerful light source enables impeccable visibility of anatomic structures during surgical conditions.

- Gradually adjustable light intensity
- Light cable detection to avoid unintentional exposure
- Remote on/off control from Erbe camera systems

Fibre optic cables

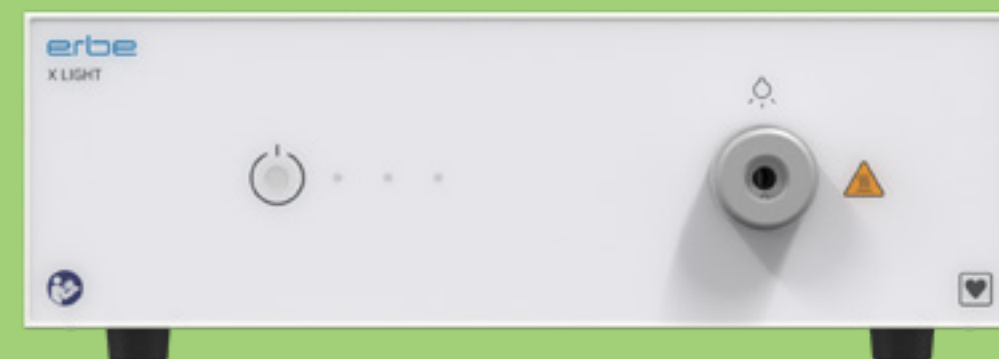
- Fused cable design for optimal light transmission and heat resistance
- Available in 3.5 and 4.8 mm to perfectly suit Erbe endoscopes and light sources



X-Light

Light source for NIR imaging in endoscopic or exoscopic diagnostic or therapeutic applications.

- Light cable detection to prevent unintentional activation
- Switching on and off via Erbe camera system



4K endoscopes

Full-range of endoscopes for high-end imaging – made in Germany cover a variety of application needs.

- Sapphire glass tip for high scratch resistance
- Three tube design for optimized sturdiness
- Laser welded joints



CAPTURE

Medical video recorder captures pictures and videos up to 4K. 12G-SDI input and output for optimal data transmission.

- 4 TB internal hard disk
- USB interfaces to record on external devices
- Allocate savings to patient
- DICOM store (still and video) & DICOM worklist



CO₂ gas insufflator

High performance insufflator with a flow rate up to 45 l/min for laparoscopic procedures.

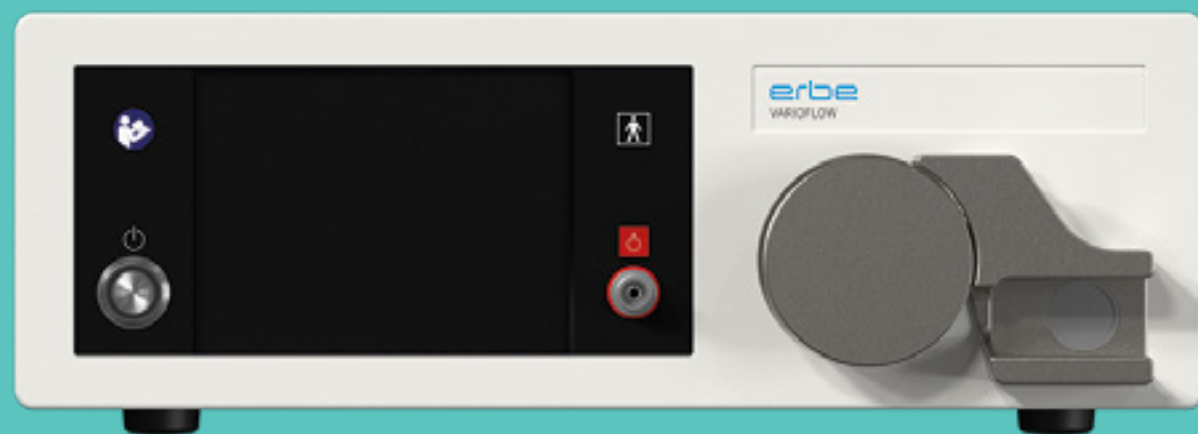
- Touch screen display for easy operation
- Prevention of sudden cavity loss by high flow rate and monitoring of CO₂ gas supply
- Reduced cross-contamination risk by external exflation valve
- Internal gas pre-heating system
- Specific setting for bariatric surgery (set pressure up to 25 mmHg)



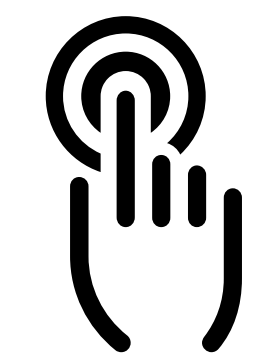
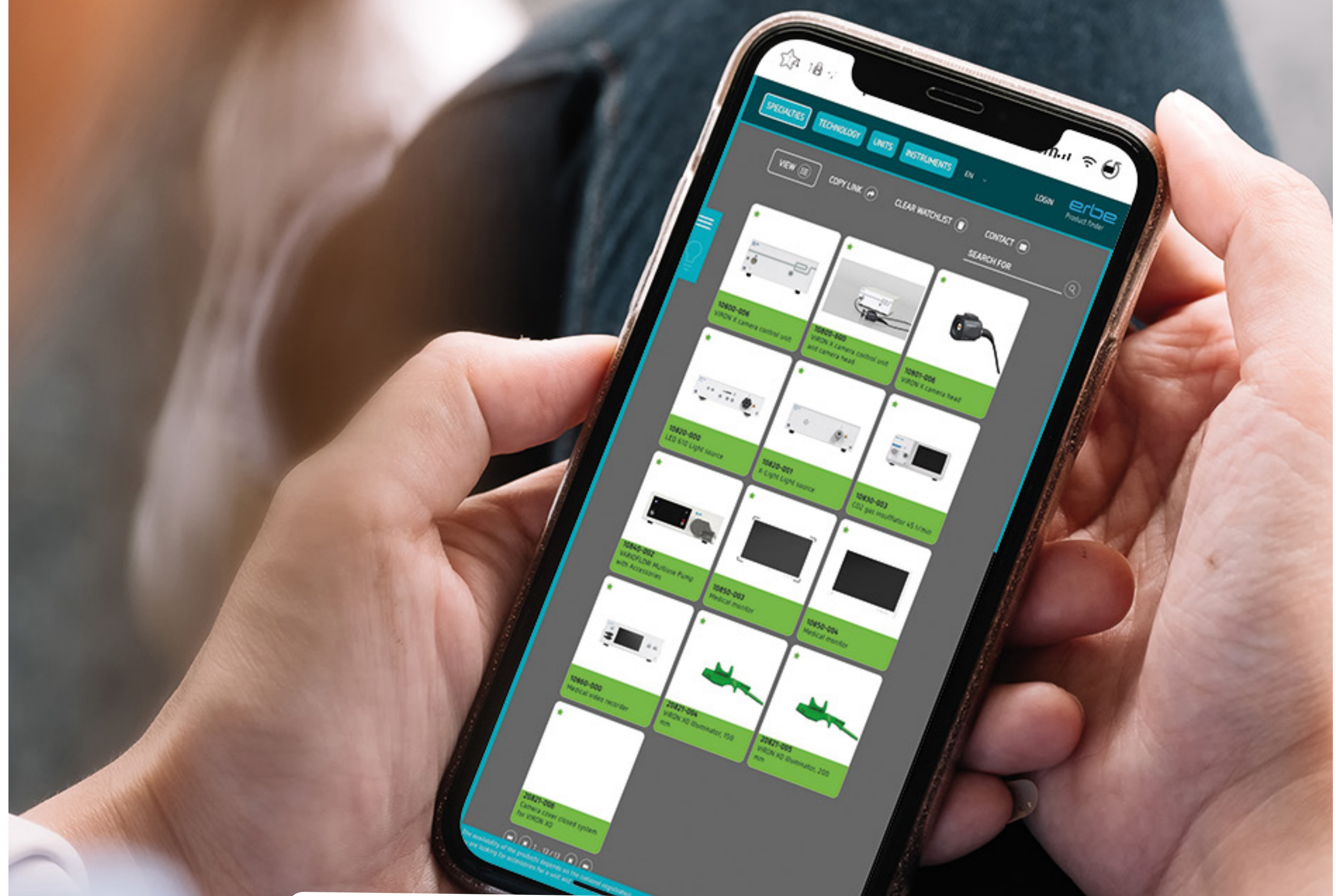
VARIOFLOW multiuse pump

Fluid pump with suction and irrigation capabilities.

- For distension, fluid aspiration and irrigation of body cavities
- Customizeable through license keys cystoscopy, arthroscopy, spine
- Touch screen display for easy operation
- Monitoring of fluid deficit
- Wireless foot switch operation



Product finder



VISIT THE ERBE PRODUCT FINDER
to take a closer look at the products